

# LOGAR THREE DEPARTURE (RNAV 1)

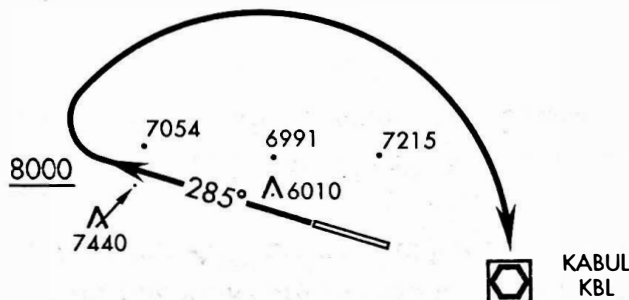
A CAA

KABUL, AFGHANISTAN

ATIS 130.15  
 GND CON 125.4  
 KABUL TOWER 120.6 284.275  
 KABUL APP CON 131.6 360.6  
 KABUL DEP 132.5 301.95

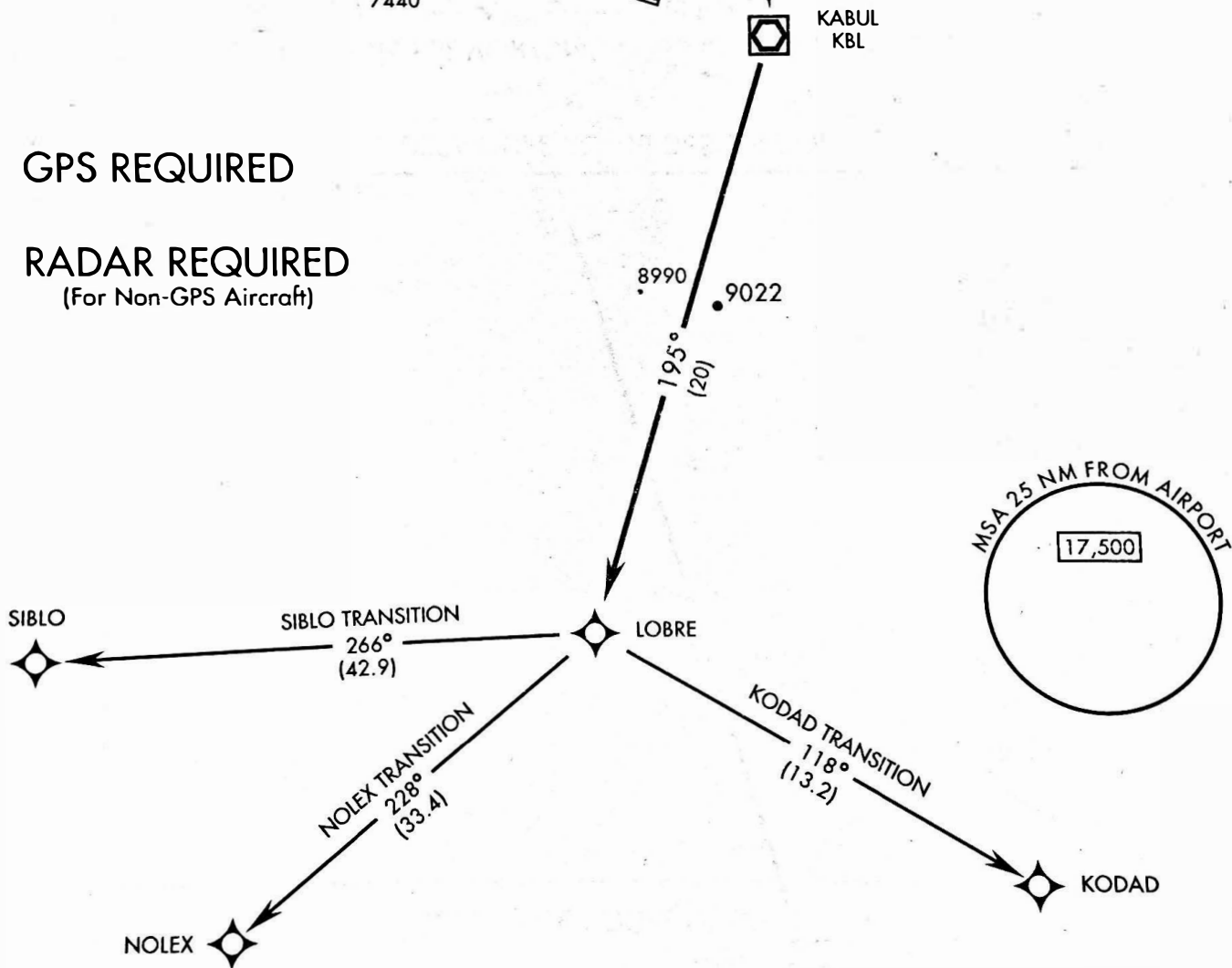
Rwy	Knots	60	120	180	240
29	V/V(fom)	450	900	1350	1800

Minimum Climb Rate to 12,000



GPS REQUIRED

RADAR REQUIRED  
(For Non-GPS Aircraft)



EMERG SAFE ALT 100 NM 21,700

Note: Chart not to scale

TLv FL160  
TA 14,000

## DEPARTURE ROUTE DESCRIPTION

**TAKE-OFF RWY 29:** Climb heading 285° to 8000, then turn right direct KABUL. At KABUL, turn right track 195° to LOBRE, thence...

**KODAD TRANSITION:** Turn left, track 118° to KODAD and maintain assigned altitude.

**NOLEX TRANSITION:** Turn right, track 228° to NOLEX and maintain assigned altitude.

**SIBLO TRANSITION:** Turn right, track 266° to SIBLO and maintain assigned altitude.