

APCH CRS **284°**  
 Rwy ldg **11,520**  
 THRE **5873**  
 Arpt Elev **5877**

ACAA

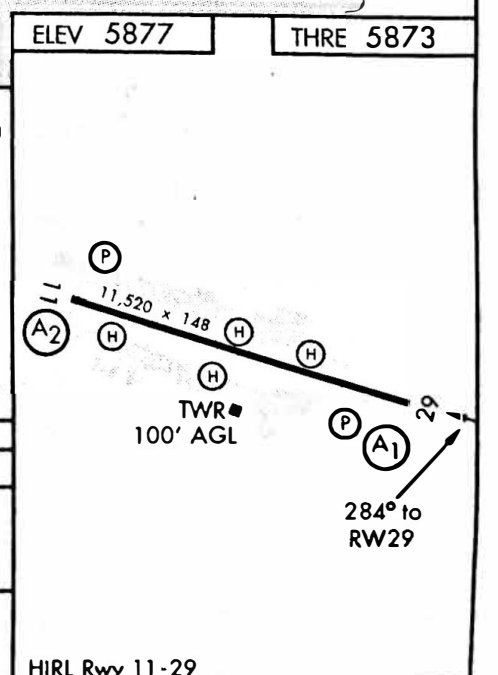
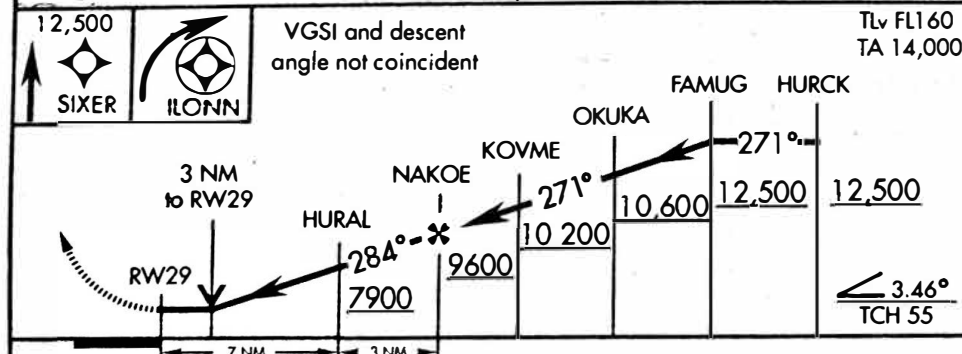
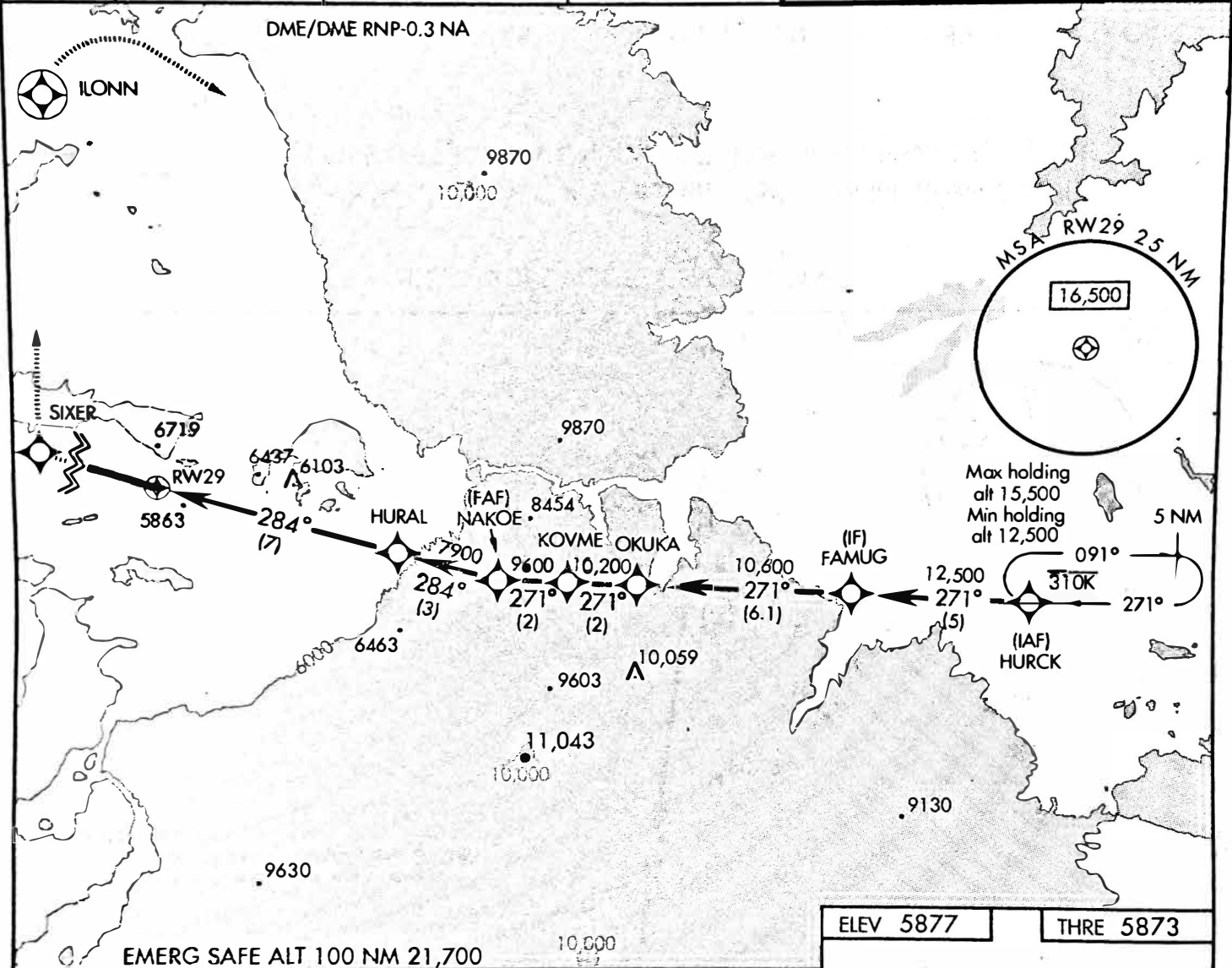
HAMID KARZAI INTL (OAKB)

▼ \* When ALS inop, increase CAT A vis to 2000m, CAT B vis to 2400m, CAT CD vis to 5000m.  
 \*\* Circling not authorized south of Rwy 11-29. Night operations are not authorized for Rwy 11.



MISSED APPROACH: Climb to 12,500 direct SIXER, then turn right, track to ILONN. After ILONN, turn right direct HURCK maintain ATC assigned altitude and hold.

ATIS <b>130.15</b>	KABUL APP CON <b>131.6 360.6</b>	BAGRAM APP CON <b>127.925 379.3</b>	KABUL ARR <b>132.5 301.95</b>	KABUL TOWER <b>120.6 284.275</b>	GND CON <b>125.4</b>
-----------------------	-------------------------------------	--	----------------------------------	-------------------------------------	-------------------------



CATEGORY	A	B	C	D
LNAV MDA *	7040-1200m 1167 (1200-1200m)	7040-1600m 1167 (1200-1600m)	7040-4600m 1167 (1200-4600m)	
CIRCLING **	7200-2000m 1323 (1400-2000m)	7540-2400m 1663 (1700-2400m)	7540-5000m 1663 (1700-5000m)	