

Effective: 07 DEC 2017

PANS-OPS

INSTRUMENT APPROACH CHART

AD ELEV 1287

**VOR RWY 06
MAZAR-e-SHARIF (OAMS)**

KABUL CENTRE			MAZAR CONTROL			MAZAR TOWER		
126.325	118.300	242.600	127.375 399.550			135.350 396.000		
VOR/DME AMS 116.8 / CH115X	APP COURSE 068°	FAF ALT 3000	GS 5.2%	MDA 1840	THR ELEV 1287	ALS 900 M	LDA 9836	

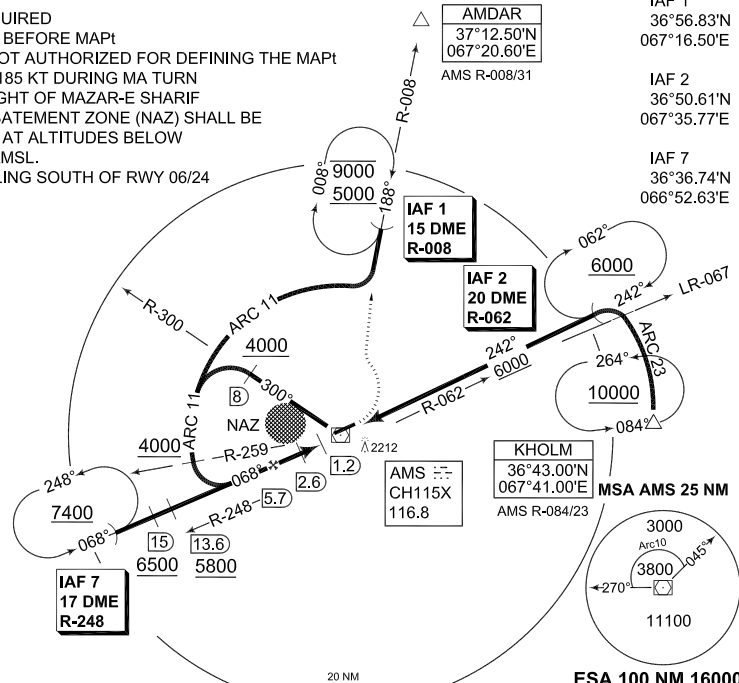
NOTE:

- a) DME REQUIRED
- b) NO TURN BEFORE MAPt
- c) TIMING NOT AUTHORIZED FOR DEFINING THE MAPt
- d) MAX IAS 185 KT DURING MA TURN
- e) OVERFLIGHT OF MAZAR-E SHARIF NOISE ABATEMENT ZONE (NAZ) SHALL BE AVOIDED AT ALTITUDES BELOW 4000 FT AMSL.

① NO CIRCLING SOUTH OF RWY 06/24

AMDAR
37°12.50'N
067°20.60'E
AMS R-008/31

- IAF 1
36°56.83'N
067°16.50'E
- IAF 2
36°50.61'N
067°35.77'E
- IAF 7
36°36.74'N
066°52.63'E



UKMUS
36°27.00'N
066°22.80'E
AMS R-246/43

KHOLM
36°43.00'N
067°41.00'E
AMS R-084/23

MSA AMS 25 NM
3000
Arc10
3800
045
1100

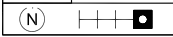
ESA 100 NM 16000

TA 14000

MISSED APPROACH
Climb straight ahead to 1800 ft. Turn left to intercept AMS R-008. Proceed to VOR Holding IAF 1, climbing to 5000 ft and follow ATC instructions.

DME AMS	5.7	5	4	3	2.6	2
DIST THR	5.2	4.5	3.5	2.5	2.1	1.5
ALTITUDE	3000	2760	2440	2120	1990	1810

TCH 49



CHANGE: NEW PROCEDURE

CATEGORY	A	B	C	D
VOR 06	1840 - 1.8 553 (600-1.8/2.5)	1840 - 1.8 553 (600-1.8/2.5)	1840 - 1.8 553 (600-1.8/2.5)	1840 - 1.8 553 (600-1.8/2.5)
① CIRCLING	1840 - 2.4 553 (600-2.4)	1860 - 2.6 573 (600-2.6)	2050 - 3.6 763 (800-3.6)	2060 - 3.6 773 (800-3.6)

VOR RWY 06

36°42.42'N
067°12.56'E

MAZAR-e-SHARIF (OAMS)