

PANS-OPS

INSTRUMENT APPROACH CHART

AD ELEV 1287

**VOR RWY 24
MAZAR-e-SHARIF (OAMS)**

KABUL CENTRE			MAZAR CONTROL			MAZAR TOWER		
126.325	118.300	242.600	127.375 399.550			135.350 396.000		
VOR/DME AMS 116.8 / CH115X	APP COURSE 238°	FAF ALT 3000	GS 5.2%	MDA 1720	THR ELEV 1267	ALS 900 M	LDA 9836	

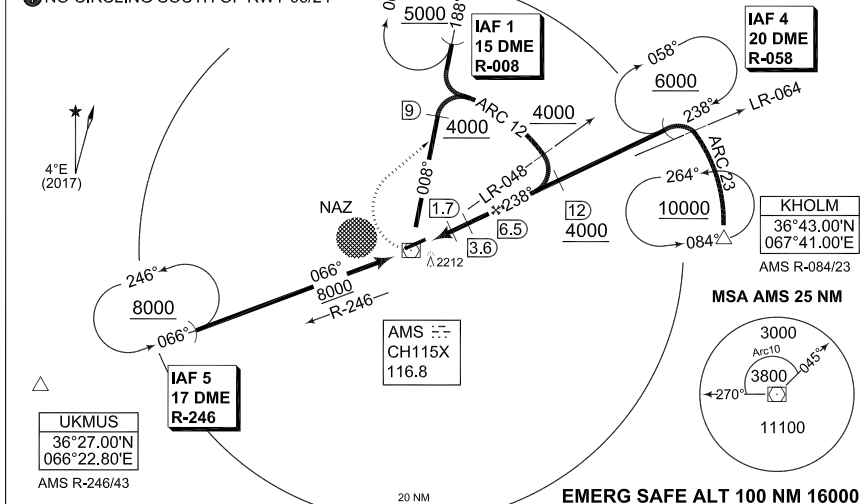
NOTE:

- a) DME REQUIRED
- b) NO TURN BEFORE MAPt
- c) TIMING NOT AUTHORIZED FOR DEFINING THE MAPt
- d) MAX IAS 185 KT DURING MA TURN
- e) OVERFLIGHT OF MAZAR-E SHARIF NOISE ABATEMENT ZONE (NAZ) SHALL BE AVOIDED AT ALTITUDES BELOW 4000 FT AMSL.

① NO CIRCLING SOUTH OF RWY 06/24

AMSTAR
37°12.50'N
067°20.60'E
AMS R-008/31

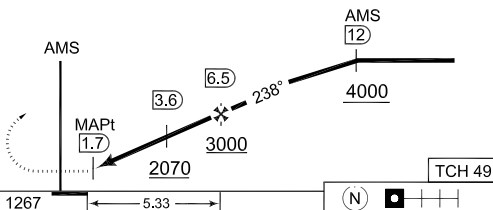
IAF 1
36°56.83'N
067°16.50'E
IAF 4
36°51.62'N
067°34.92'E
IAF 5
36°36.18'N
066°52.88'E



MISSED APPROACH

Climb straight ahead to 1700 ft. Turn right to intercept AMS R-008. Proceed to VOR Holding IAF 1, climbing to 5000 ft and follow ATC instructions.

DME AMS	3	3.6	4	5	6	6.5
DIST THR	1.9	2.4	2.9	3.9	4.9	5.4
ALTITUDE	1900	2070	2220	2530	2850	3000



CHANGE: NEW PROCEDURE

THR ELEV 1267	← 5.33 →			N
CATEGORY	A	B	C	D
VOR 24	1720 - 1.4 453 (500-1.4/2.1)	1720 - 1.4 453 (500-1.4/2.1)	1720 - 1.4 453 (500-1.4/2.4)	1720 - 1.4 453 (500-1.4/2.4)
① CIRCLING	1800 - 2.4 513 (600-2.4)	1860 - 2.6 573 (600-2.6)	2050 - 3.6 763 (800-3.6)	2060 - 3.6 773 (800-3.6)

VOR RWY 24

36°42.42'N
067°12.56'E

MAZAR-e-SHARIF (OAMS)