

HI-ILS or LOC/DME RWY 23

LOC/DME I-OKN 108.55 Chan 22(Y)	APCH CRS 233°	Rwy Idg 10,497 TDZE 3338 Arpt Elev 3338
---	-------------------------	--

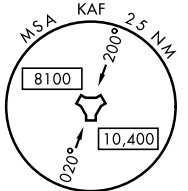
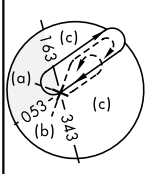
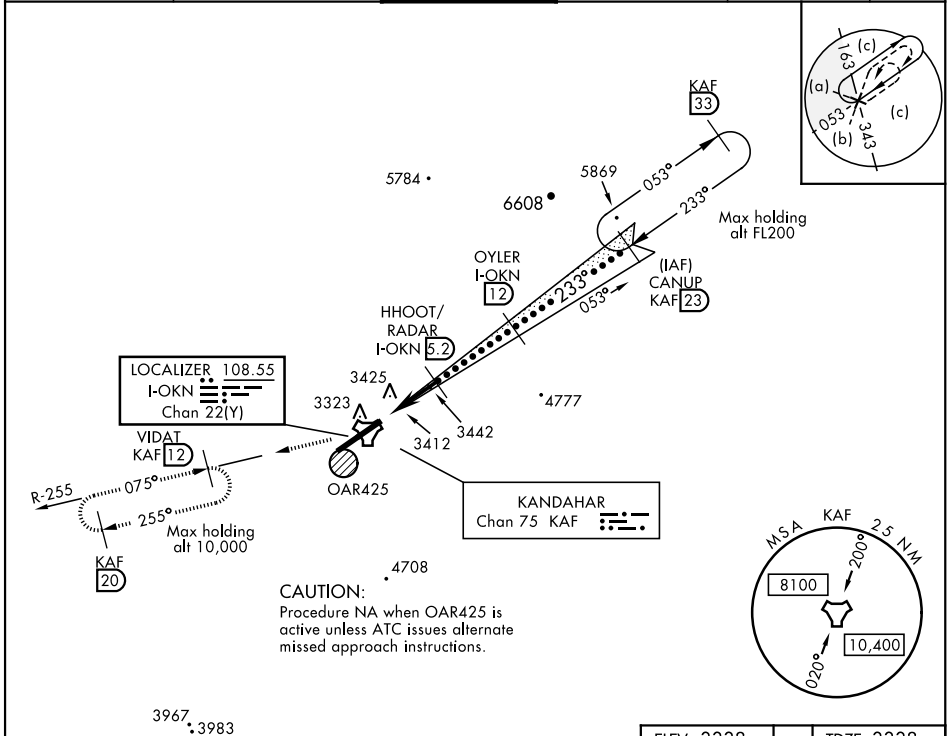
[USAF] JAL-3085

KANDAHAR (OAKN)

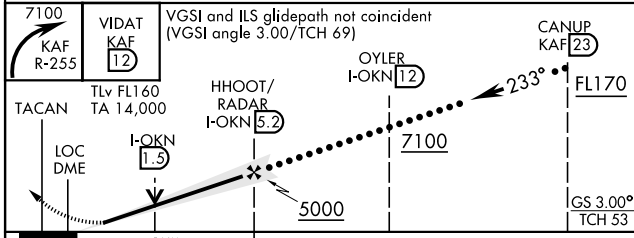
ALSIF-1
 * When ALS inop, increase CAT CDE vis to 2200m.

MISSED APPROACH: Climb to 7100 via KAF TACAN R-255 to VIDAT and hold, continue climb-in-hold to 7100.

ATIS 127.025 242.675	KANDAHAR APP CON 124.025 355.1	KANDAHAR TOWER 125.5 360.2	GND CON 119.5 300.2	CLNC DEL 123.825 244.6	ASR/PAR
--------------------------------	--	--------------------------------------	-------------------------------	----------------------------------	---------



EMERG SAFE ALT 100 NM 15,800



ELEV 3338	TDZE 3338
HIRL Rwy 05-23	
FAF to MAP 4.5 NM	
Knots	120 140 160 180 200
Min:Sec	2:15 1:56 1:41 1:30 1:21

CATEGORY	C	D	E
S-ILS 23	3538-1200m	200 (200-1200m)	
S-LOC 23*	3800-1500m	462 (500-1500m)	
CIRCLING	NOT AUTHORIZED		

HI-ILS or LOC/DME RWY 23