

# HI-TACAN RWY 05

TACAN KAF Chan 75	APCH CRS 055°	Rwy ldg TDZE Arprt Elev	10,497 3314 3338
----------------------	------------------	-------------------------------	------------------------

JAL-3085 (USAF)

KANDAHAR (OAKN)

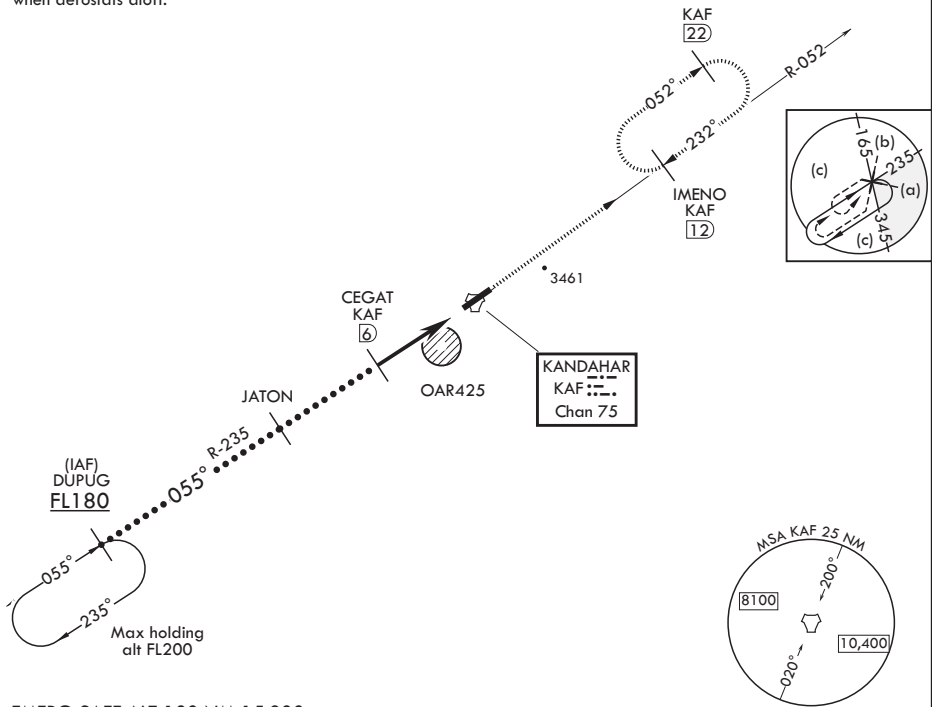
**⚠** MISSED APPROACH: Climb to 9500 via KAF TACAN R-052 to IMENO and hold, continue climb-in-hold to 9500.

ATIS 127.025 242.675	APP CON 124.025 355.1	TOWER 125.5 360.2	GND CON 119.5 300.2	CLNC DEL 123.825 244.6	ASR/PAR 6848
-------------------------	--------------------------	----------------------	------------------------	---------------------------	-----------------

CAUTION: Final approach course in close proximity to OAR425.

## NOT FOR CIVIL USE

Procedure not authorized when aerostats aloft.



EMERG SAFE ALT 100 NM 15,800

DUPEG FL180	VGSI and descent angles not coincident (VGSI Angle 3.00°/TCH 64 ft).	TA 14,000 TLv FL160	9500 KAF R-052	IMENO KAF 12	ELEV 3338	TDZE 3314
FL180	JATON 7200	CEGAT 5300	EMAVO 2.2 1.5	TACAN		
CATEGORY	C	D	E			
S-05	3820-2400m	506	(500-2400m)			
CIRCLING	NOT AUTHORIZED					
						HIRL Rwy 05-23

# HI-TACAN RWY 05