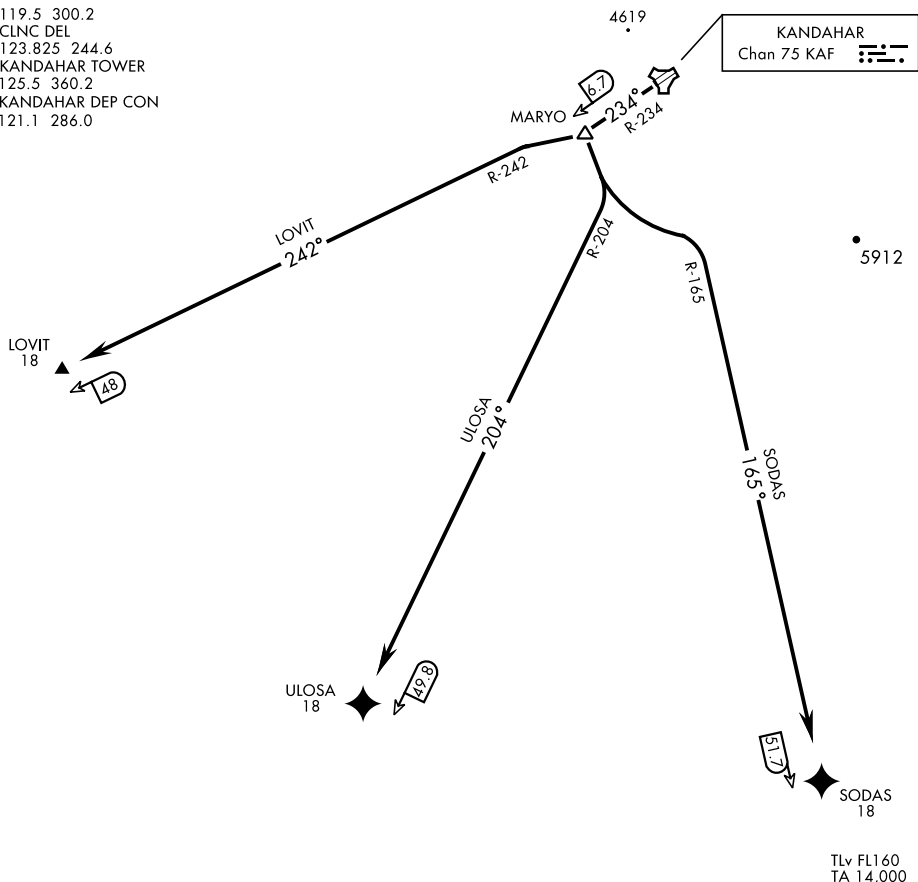


ATIS
127.025 242.675
GND CON
119.5 300.2
CLNC DEL
123.825 244.6
KANDAHAR TOWER
125.5 360.2
KANDAHAR DEP CON
121.1 286.0

Procedure not authorized when aerostats aloft.



DEPARTURE ROUTE DESCRIPTION

TAKE-OFF RWY 23: Climb on track direct MARYO (KAF R-234/6.7 DME) thence . . .

LOVIT: . . .turn right and intercept KAF R-242 direct LOVIT (KAF R-242/48 DME) then assigned route.
Maintain assigned altitude.

SODAS: . . .turn left and intercept KAF R-165 direct SODAS (KAF R-165/51.7 DME) then assigned route.
Maintain assigned altitude.

ULOSA: . . .turn left and intercept KAF R-204 direct ULOSA (KAF R-204/49.8 DME) then assigned route.
Maintain assigned altitude.