

APCH CRS **053°**  
 Rwy Idg **10,497**  
 TDZE **3314**  
 Arprt Elev **3338**

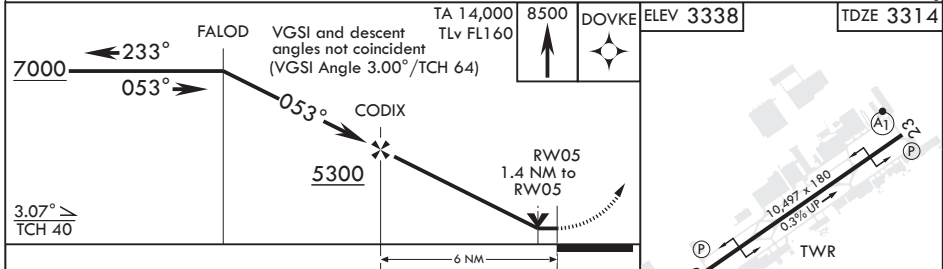
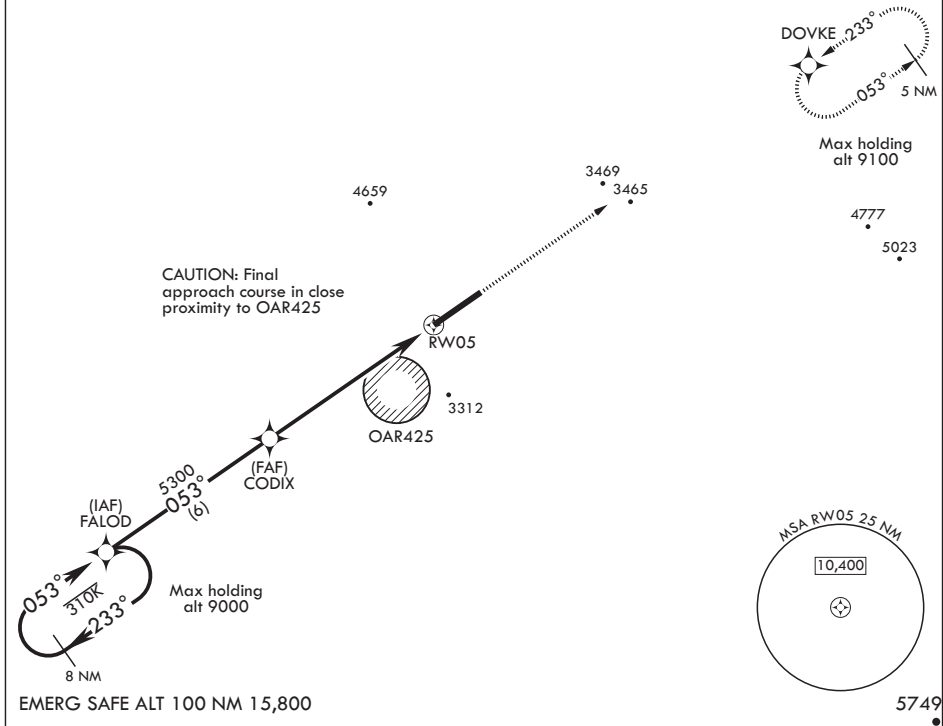
AL-3085 (USAF)

KANDAHAR (OAKN)

**⚠** \* Circling NA SE of RWY 05-23  
 MISSED APPROACH: Climb to 8500 direct DOVKE and hold, continue climb-in-hold to 8500.

ATIS <b>127.025 242.675</b>	APP CON <b>124.025 355.1</b>	TOWER <b>125.5 360.2</b>	GND CON <b>119.5 300.2</b>	CLNC DEL <b>123.825 244.6</b>	ASR/PAR
--------------------------------	---------------------------------	-----------------------------	-------------------------------	----------------------------------	---------

DME/DME RNP-0.3 NA  
 Procedure Not Authorized  
 when Aerostats Aloft.



CATEGORY	A	B	C	D	E
LNAV MDA	3820-1600m 506 (500-1600m)		3820-2400m 506 (500-2400m)		
<b>C</b> CIRCLING*	3820-1600m 482 (500-1600m)	3860-1600m 522 (600-1600m)	NA		

653° to RW05

HIRL Rwy 05-23