

KANDAHAR, AFGHANISTAN

# RNAV (GPS) RWY 23

APCH CRS <b>233°</b>	Rwy Idg <b>10,497</b>
	TDZE <b>3338</b>
	Arpt Elev <b>3338</b>

AL-3085 (USAF)

KANDAHAR (OAKN)

**▼** \* When ALS inop, increase CAT AB vis to 1600m, CAT CDE vis to 2100m.  
\*\* Circling NA SE of RWY 05-23.

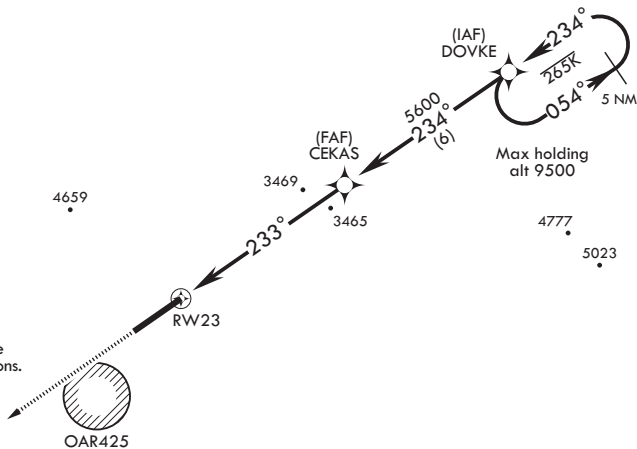
**ALSF-1** MISSED APPROACH: Climb to 6100 direct to FALOD and hold.

ATIS <b>127.025 242.675</b>	APP CON <b>124.025 355.1</b>	TOWER <b>125.5 360.2</b>	GND CON <b>119.5 300.2</b>	CLNC DEL <b>123.825 244.6</b>	ASR/PAR
--------------------------------	---------------------------------	-----------------------------	-------------------------------	----------------------------------	---------

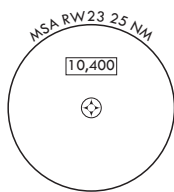
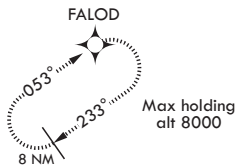
DME/DME RNP-0.3 NA

Procedure Not Authorized when Aerostats Aloft.

LNAV visibility reduction by helicopters NA.



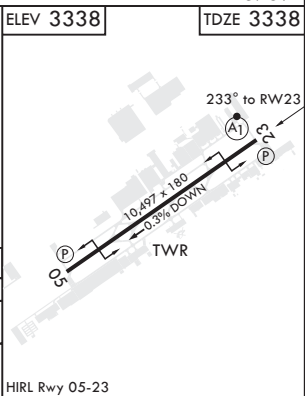
CAUTION: Procedure NA when OAR425 is active unless ATC issues alternate missed approach instructions.



EMERG SAFE ALT 100 NM 15,800

5739

6100	FALOD	TA 14,000 TLv FL160	DOVKE	ELEV 3338	TDZE 3338
			054° → 7500		
			← 234°		
		CEKAS	234°		
		5600			
		1.4 NM to RWY 23			
		233°			
		6 NM			
			VGSI and descent angles not coincident (VGSI Angle 3.00°/TCH 69)		
			≤ 3.49°		
			TCH 40		
CATEGORY	A	B	C	D	E
LNAV MDA*	3840-1200m 502 (600-1200m)		3840-1600m 502 (600-1600m)		
CIRCLING**	3840-1600m 502 (600-1600m)	3860-1600m 522 (600-1600m)	NA		



KANDAHAR, AFGHANISTAN

31°30'N - 65°51'E

KANDAHAR (OAKN)

Amdt 2 09NOV17

# RNAV (GPS) RWY 23