

17033

JESOV TWO (RNAV) DEPARTURE

SHL-3211 [USAF]

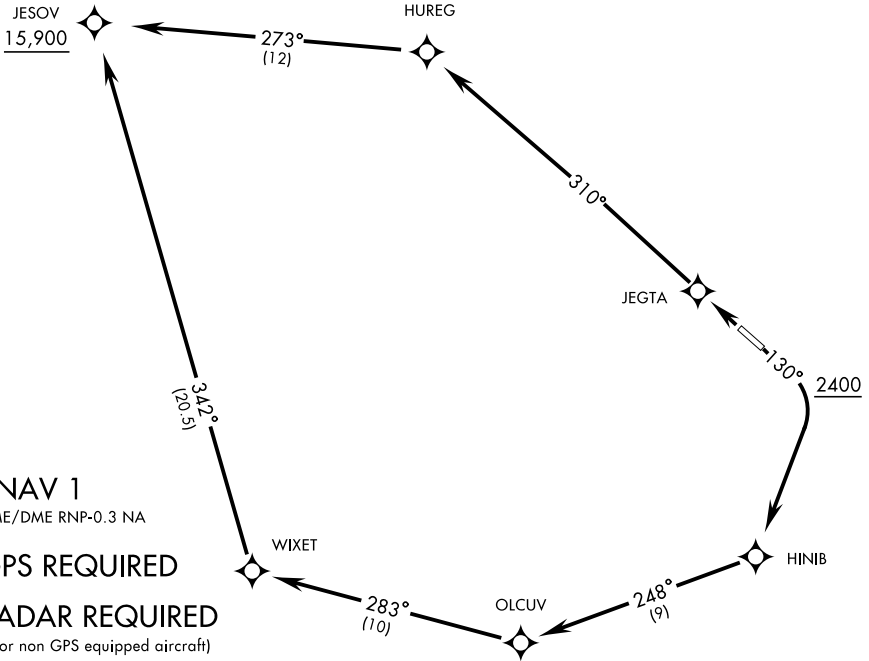
JALALABAD (OAJL)

JALALABAD, AFGHANISTAN

JALALABAD TOWER
129.7 231.0•
10,130

Rwy	Knots	60	120	180	240	300	360
13* (a)	V/V(fpm)	350	700	1050	1400	1750	2100
13† (b)	V/V(fpm)	425	850	1275	1700	2125	2550
31* (c)	V/V(fpm)	483	966	1449	1932	2415	2898
31† (d)	V/V(fpm)	547	1094	1641	2188	2735	3282

* Minimum Climb Rate † ATC Climb Rate

(a) to 7900**(b)** to 15,900**(c)** to 7500**(d)** to 15,900Procedure not authorized when
aerostats east of the rwy are aloft.**DEPARTURE ROUTE DESCRIPTION**

TAKE-OFF RWY 13: Climb on heading 130° to 2400, then climbing right turn direct HINIB. Then track 248° to OLCUV, track 283° to WIXET, track 342° to JESOV. Cross JESOV at or above 15,900, thence...

TAKE-OFF RWY 31: Climb direct JEGTA, then track 310° to HUREG, track 273° to JESOV. Cross JESOV at or above 15,900, thence...

...Proceed on course or as directed by ATC.

JESOV TWO (RNAV) DEPARTUREOrig 02FEB17
TERPS

JALALABAD, AFGHANISTAN

JALALABAD (OAJL)